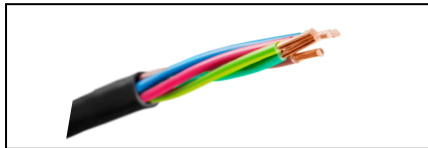


# Wire & Cable Colors

## Industry Standard Colors

	PVC	Nylon	PE	PP	EVA	PDVF
Munsell	●	●	●	●	●	●
NEMA	●		●		●	
Automotive	●	●	●		●	
Smart Products						●

## Benefits

### Munsell

- Excellent value for electrical & fiber optic applications
- Complete palette of Munsell centroid colors
- Outstanding electrical properties
- Engineered for precise color and batch-to-batch consistency

### NEMA

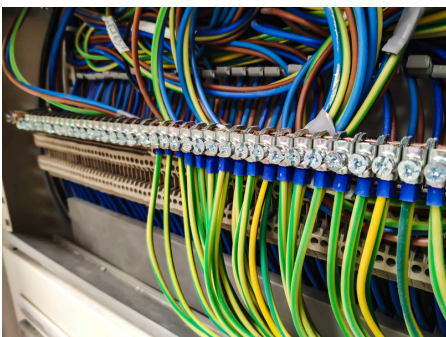
- Primarily for electrical applications
- Complete palette of colors
- Outstanding electrical properties
- Engineered for precise color and batch-to-batch consistency

### Automotive

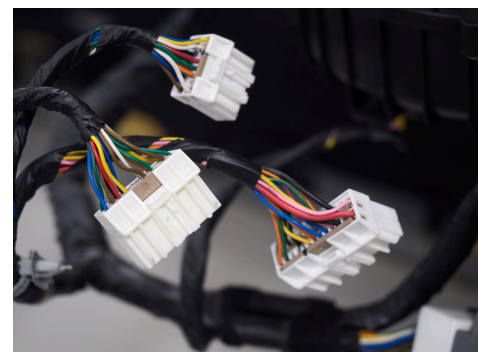
- Engineered for a wide variety of automotive standards
- Complete palette of industry standard colors
- Good oil & fuel resistant properties
- Outstanding electrical properties
- Engineered for precise color and batch-to-batch consistency

### Smart Products

- Excellent low smoke, low flame transmission properties
- Retains physical & chemical properties of base resin
- Bright colors, high strength for low let-down ratio
- Complete palette of Munsell colors
- Engineered for precise color and batch-to-batch consistency



For more information  
<https://chromacolors.com>



# Standard Colors

PVC MUNSELL <i>Centroid</i>
Black 105
Blue 115
Blue 5027 (Aqua)
Brown 316
Gray 227
Green 580
Orange 318
Pink 302 (Rose)
Purple 124
Red 323
White 102
Yellow 302
Yellow 342 (Very Strong)

PVC MUNSELL Preferred Limits
Gray 122
Gray 169
Green 145
Green 220
Green 513
Red 119

PVC J-1128
Black 100
Dk Blue 160
Lt Blue 132
Brown 312
Gray 126
Dk Green 555
Lt Green 519
Orange 322
Pink 108
Purple 122
Red 325
Tan 395
White 102
Yellow 316





# Standard Colors

PVC JIS
Black 100
Dk Blue 160
Lt Blue 132
Brown 312
Gray 126
Dk Green 368
Lt Green 519
Orange 322
Purple 122
Red 325
Tan 395
White 102
Yellow 316

PVC NEMA
Black 105
Dk Blue 116
Lt Blue 114
Lt Brown 318
Gray 124
Gray 128
Dk Green 312
Lt Green 310
Orange 322
Pink 108
Purple 130
Red 306
Tan 326
White 102
Yellow 324

PE MUNSELL
Black 800
Blue 7035
Blue (Aqua) 874
Brown 8851
Gray 8861
Green 7087
Orange 8926
Pink (Rose) 800
Purple 816
Red 7726
White 802
Yellow 814

PP MUNSELL
Black 1578
Blue 1590
Blue (Aqua) 1580
Brown 1581
Gray 1582
Green 1583
Orange 1584
Pink 1585
Purple 1586
Red 1587
White 1588
Yellow 1589

Technical assistance is available.  
 Please contact Chroma's technical service  
 team at 609-397-8200.

# Standard Colors

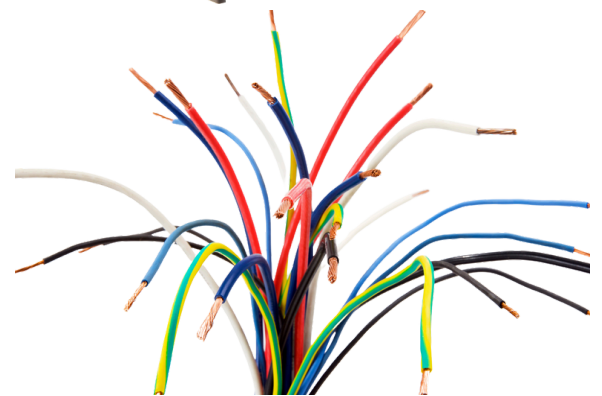
PVDF Munsell Standard	PVDF Munsell High Performance	FEP	EVA J1128
Black 3030	Black 3003	9494	Black 416
Blue 3001	Blue 3005	Black 4025	Dk Blue 406
Blue (Aqua) 3029	Blue (Aqua) 3013	Blue 4021	Lt Blue 418
Brown 3034	Brown 3012	Dk Blue 4031	Brown 412
Gray 3035	Gray 3011	Brown 4027	Gray 414
Green 3023	Green 3006	Gray 4028	Dk Green 419
Orange 3025	Orange 3002	Green 4023	Lt Green 431
Pink 3032	Pink 3026	Orange 4020	Orange 427
Purple 3028	Purple 3022	Purple 4024	Pink 422
Red 3004	Red 3033	Red 4026	Purple 400
White 3031	White 3008	White 4022	Red 425
Yellow 3024	Yellow 3007	Yellow 4029	Tan 443
			White 418
			Yellow 421

# Standard Colors

ETFE
Black 4100
Blue 4101
Dk Blue 4110
Brown 4102
Gray 4103
Green 4104
Orange 4105
Pink 4112
Purple 4107
Red 4106
White 4108
Yellow 4109

ECTFE
Black 4600
Blue 4601
Brown 4602
Gray 4603
Green 4604
Orange 4605
Purple 4607
Red 4606
White 4608
Yellow 4609

NYLON
Black 601



# FEP Standard Colors

Chroma Code (102 Series)	Suggested Alternate (9800 Series) Chroma Code
WT4060	WT4022
OR4055	OR4020
BL4051	BL4021
GN4053	GN4023-1
BN4052	BN4027
RD4058	RD4026
GY4054	GY4028
BK4050	BK4025
YE4059	YE4029
VI4056	VI4024

Chroma Code (108 Series)
WT4026
OR4025
BL4022
GN4024
BN4023

Chroma Code (200 Series)
WT4062
BL4064
GN4063

